



Incident reporting for needle stick/injury



IMMEDIATELY

Seek medical care for the injury at nearest emergency room or your clinical campus site.



NEXT

Report– if on clinical campus, report incident to senior resident, attending physician or supervising faculty.



WITHIN 24 HOURS

Report if injury occurs at the School of Medicine, [contact Student Affairs](#) for assistance.



NEXT

Report injury to [M.D. Health Records](#) via email or phone.



AS SOON AS POSSIBLE

Complete [Report of Injury form](#) to Risk Management.



NEXT

Reach out to [Student Affairs](#) for support.



WITHIN 48 HOURS

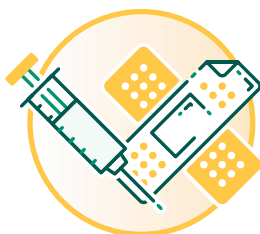
Schedule necessary follow-up testing and care.



FOLLOW UP

Remain in contact with the [M.D. Health Records](#) Office for injury management.

IMMEDIATE CARE OF THE BODY SITE



Needle sticks and cuts:
decontaminate the exposed or contaminated site immediately by washing with soap and water



Splashes to the nose, mouth, or skin:
flush with water



Splashes to eyes:
irrigate eyes with clean water, saline, or sterile irrigant



Scan me
for Injury and needlestick protocol site